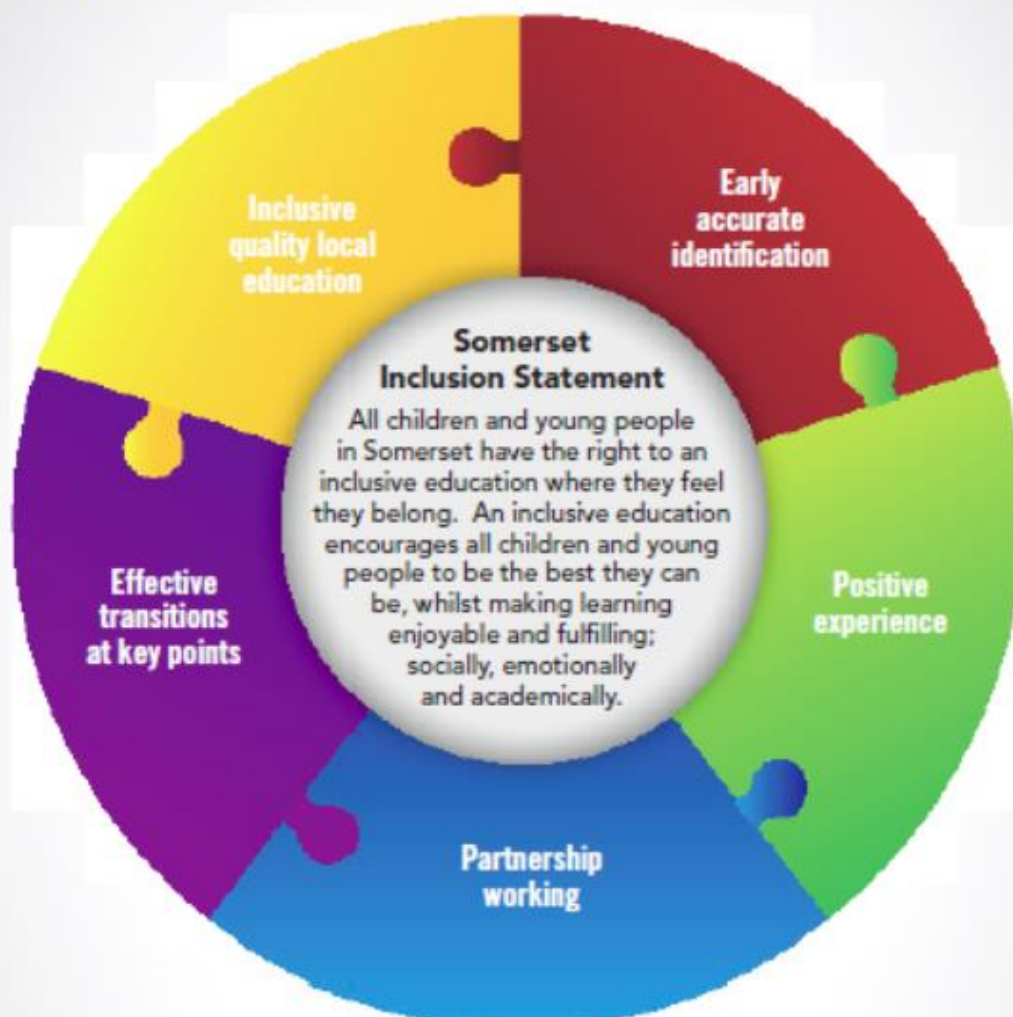


Somerset Core Standards for SEND

These education standards describe what all Somerset schools, settings and colleges can do for children and young people with special educational needs and/or disability (SEND).



- ✓ **SEND is everyone's business**
- ✓ **All teachers are teachers of all children/young people**
- ✓ **The right support in the right place at the right time**



To find out more about the standards and the supporting tools search www.somerset.gov.uk/localoffer for Core Standards

